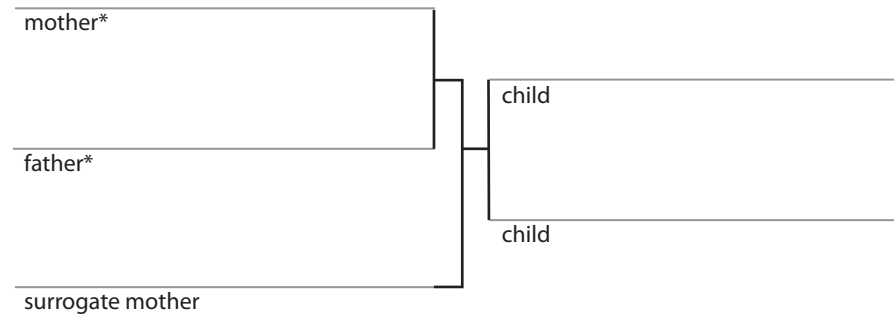


mother, father, {no natural children} children by a surrogate [smaller]

mother and father's fertilized embryo implanted in surrogate
who carries child through gestational pregnancy and delivery.

*child inherits genetic makeup from this person



If you need more child brackets, you can draw in more brackets with a pencil and ruler.
If you have only one child in your family, leave the second child line above blank.